

SABROE SAB™ screw compressor units

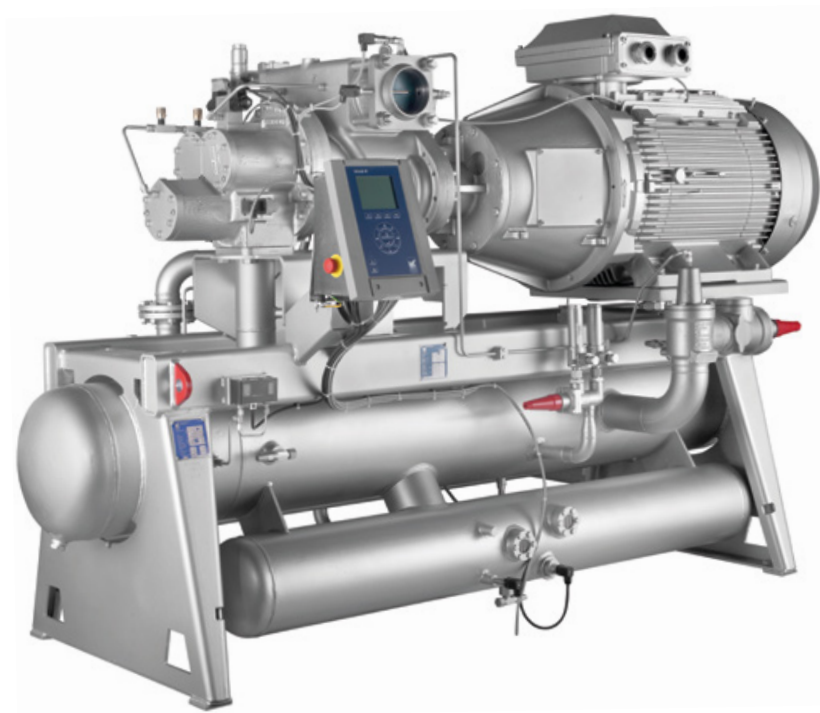
Small single-stage compressors with swept volumes of 200–1000 m³/h

SABROE SAB screw compressors are designed and configured to tackle smaller-scale industrial refrigeration requirements where a combination of exceptional reliability, high performance and low operating costs is essential.

These small units can be used with all the most common refrigerants and process gases, and all the components are selected for good accessibility and ease of service, ensuring cost-effective maintenance.

Range

Eight different models are available to provide swept volumes of 204–1016 m³/h.



SAB 151 screw compressor unit with Unisab III systems controller

Advantages

Benefits

Variable-speed drive and stepless capacity control ensure that capacity is always adjusted to suit requirements

Maximum part-load efficiency and lowest possible operating costs

SAB screw compressor units are all equipped with a Unisab III systems controller

More efficient operating profile, less downtime and longer service life

Cold Start™ valve lubricates the compressor, with no oil pump needed

Lower operating costs and less maintenance

SuperFilter II™ oil filter captures 99 of all particles larger than 5 microns

Longer bearing life, providing maximum reliability and savings on both maintenance and replacement

Space-saving design with small footprint

Significant reductions in space requirements

Options

- Variable-speed drive
- Thermosyphon and water-cooled oil coolers, with 3-way oil temperature control valve
- Liquid injection oil cooling (EZ Cool™)
- Dual SuperFilter II™ oil filters (on SAB 151 models only)
- Complete economiser systems
- Demand oil pump – controlled by Unisab™ III systems controller
- Sensors and transmitters for control by external PLC systems.

Model	Swept volume at 3000 rpm*	Swept volume at 3600 rpm*	Nominal capacities in kW at 3000 rpm						Unit dimensions in mm L x W x H	Weight excluding motor/oil kg	Sound pressure level at 3000 rpm dB(A)
			R717		R407C		With economiser				
			High-stage	Booster	High-stage		R717	R407C			
	-10/+35°C	-40/-10°C	-10/+35°C	0/+40°C	-40/+35°C						
SAB 120 S*	204	245	121	36	89	124	36	32	2200 x 1300 x 1500	1200	85
SAB 120 M	255	306	156	48	116	162	47	41	2200 x 1300 x 1500	1200	86
SAB 120 L	316	379	200	61	148	206	61	53	2200 x 1300 x 1500	1300	88
SAB 120 E	413	496	270	83	198	277	82	71	2200 x 1300 x 1500	1300	89
SAB 151 S	484	581	305	97	238	333	87	84	3000 x 1450 x 1800	2050	90
SAB 151 M	571	685	369	117	280	391	105	102	3000 x 1450 x 1800	2050	91
SAB 151 L	708	850	469	149	355	496	133	129	3000 x 1450 x 1800	2050	91
SAB 151 E	847	1016	568	180	426	596	161	155	3000 x 1450 x 1800	2050	92

2-pole motor:

3000 rpm at 50 Hz.
3600 rpm at 60 Hz or VSD.

* 4-pole motor (for SAB 120 S):

1500 rpm at 50 Hz
1800 rpm at 60 Hz or VSD

Sound pressure levels in free field, over reflecting plane and one metre distance from the unit.

Min./max. speed	R717	R407C
SAB 120 S	1000-1500	1000-1500
SAB 120 M-L-E	1000-3600	1000-3600
SAB 151 S-M-L-E	1000-3600	1000-3600

All information is subject to change without notice.

Johnson Controls Denmark ApS · Sabroe Factory
Christian X's Vej 201 · 8270 Højbjerg · Denmark
Phone +45 87 36 70 00 · Fax +45 87 36 70 05
www.sabroe.com

Johnson Controls

PUBL-5642 01.2017